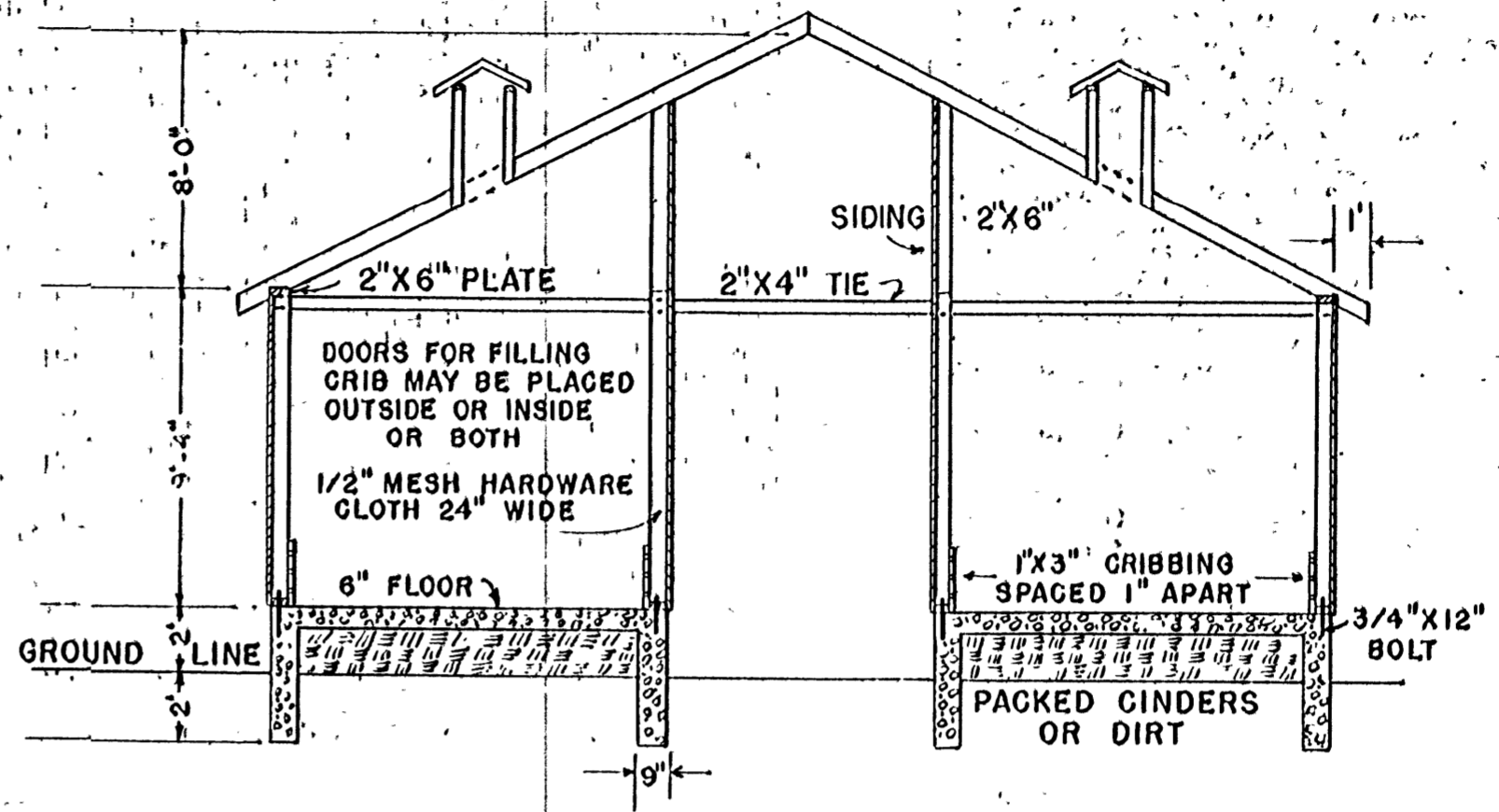
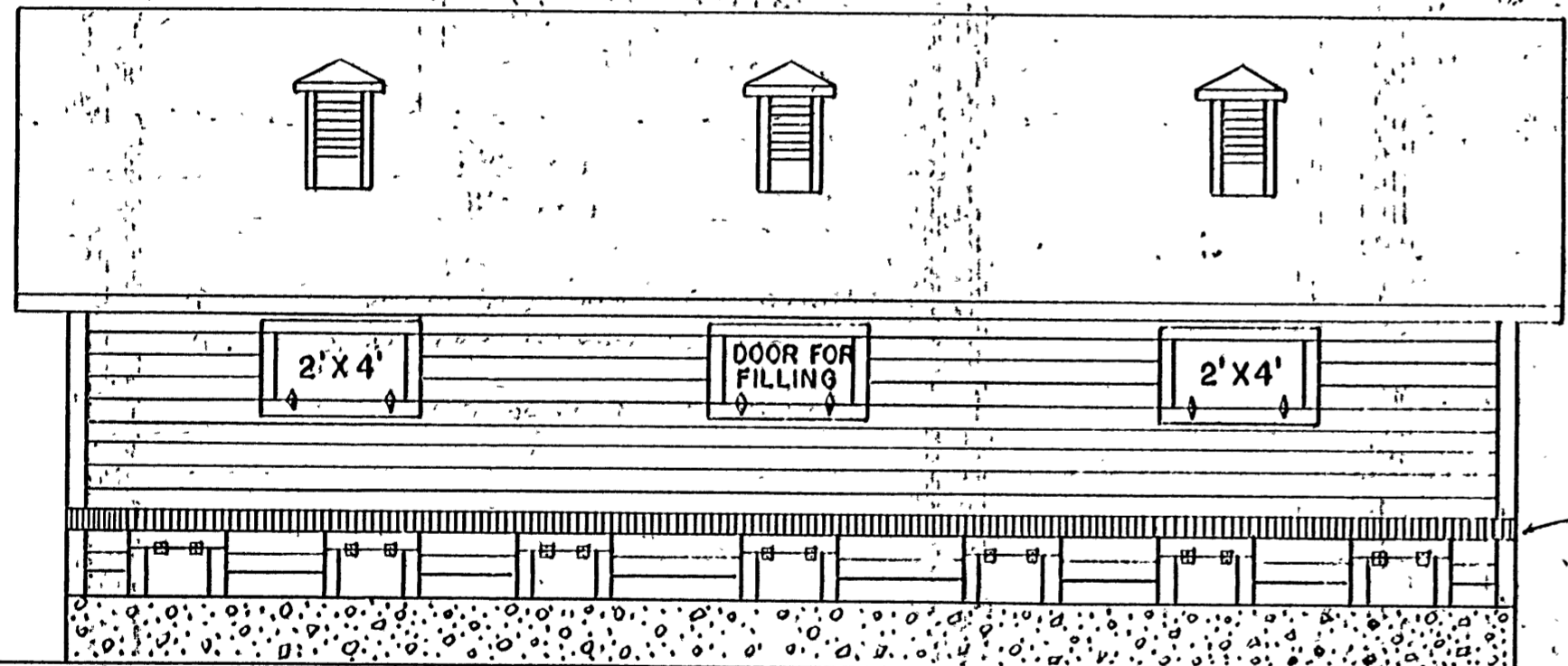


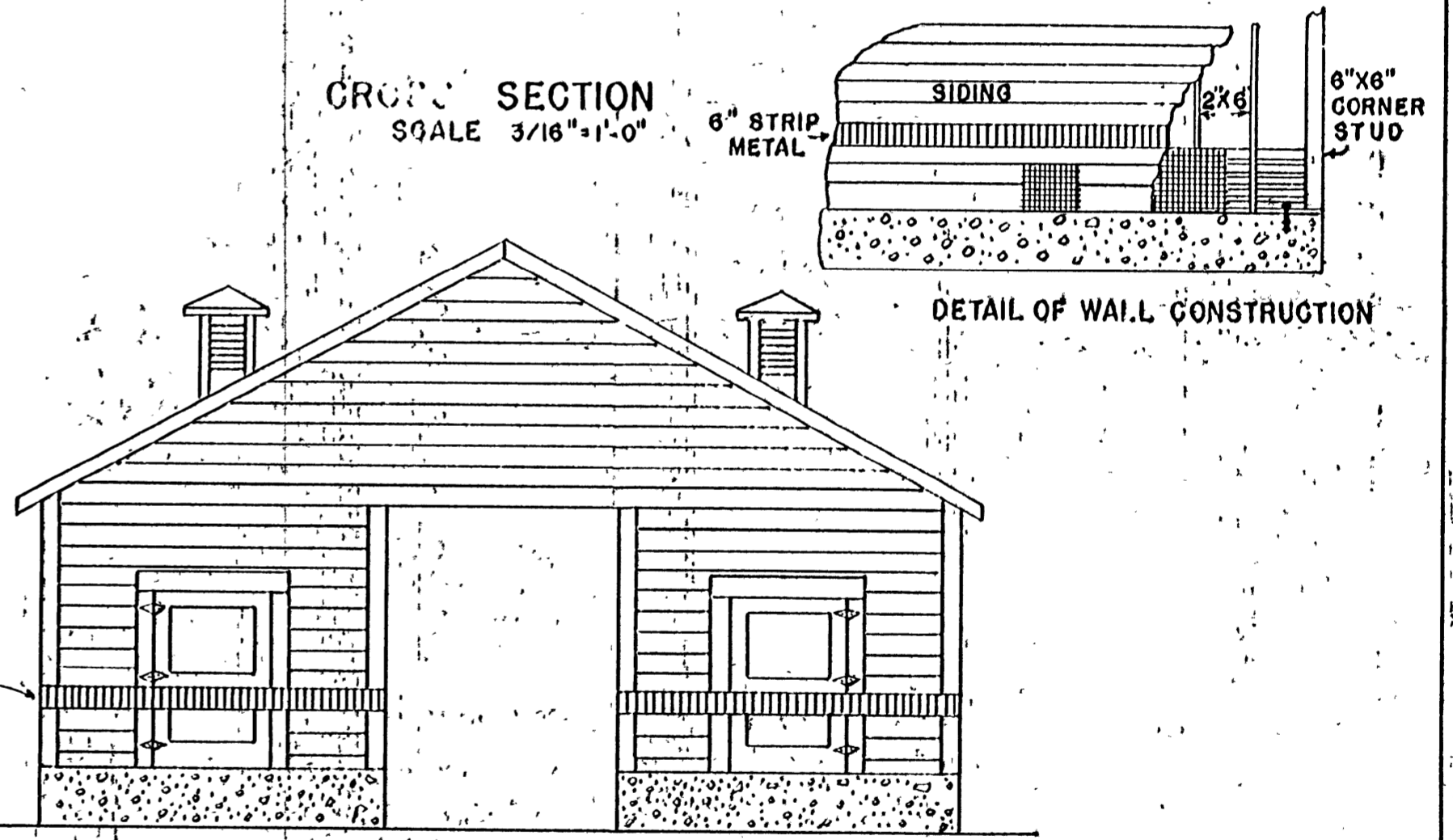
FLOOR PLAN
SCALE 3/16" = 1'-0"



CROSS SECTION
SCALE 3/16" = 1'-0"



SIDE ELEVATION
SCALE 3/16" = 1'-0"



END ELEVATION
SCALE 3/16" = 1'-0"

BILL OF MATERIAL

CONCRETE 1-2-4 MIX.

- GRAVEL.....40 YDS.
- SAND.....20 YDS.
- CEMENT.....270 SKS.

LUMBER

- SILLS - 20 - 2" x 6" x 9' - 4 - 2" x 6" x 12'
- STUDS - 8 - 6" x 6" x 9' - 102 - 2" x 6" x 9'
- PLATES - 20 - 2" x 6" x 9'
- PLATE TIES - 42 - 2" x 4" x 16'
- RAFTERS - 46 - 2" x 6" x 20'
- SHEATHING - 1825 SQ. FT. 1" MATERIAL
- SIDING - 5050 SQ. FT. 1" MATERIAL
- CRIBBING - 120 - 1" x 3" x 12"
- FRAMING FOR OPENING 15 - 2" x 4" x 10'

HARDWARE

- 40 - 3/4" x 12" BOLT
- 12 PR. 6" STRAP HINGES
- 3 PR. 8" STRAP HINGES
- 28 PR. 2" BUTT HINGES
- 76 YDS. 1/2" MESH HARDWARE CLOTH 24" WIDE
- 76 YDS. 8" METAL STRIP
- 19 SQUARES ROOFING SHINGLES, OR COMP.

COOPERATIVE EXTENSION WORK IN
AGRICULTURE AND HOME ECONOMICS

AND
U.S. DEPT. OF AGRICULTURE COOPERATING..

CORN CRIB
(3000 BU.)

MISS.	EX. 5587	SHEET 1 OF 1
-------	----------	--------------

732 -