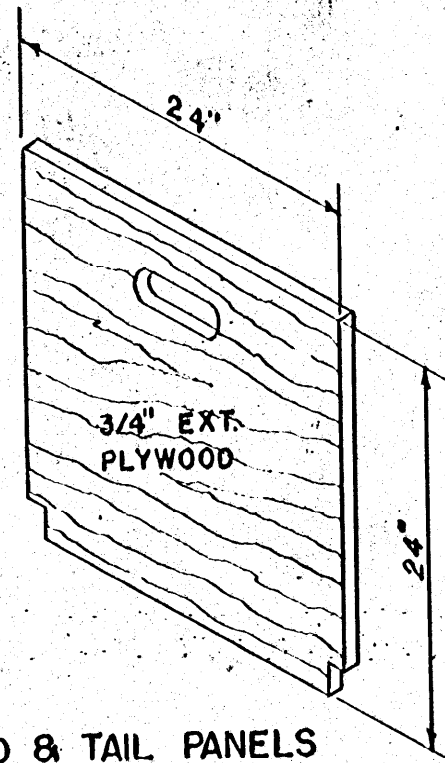
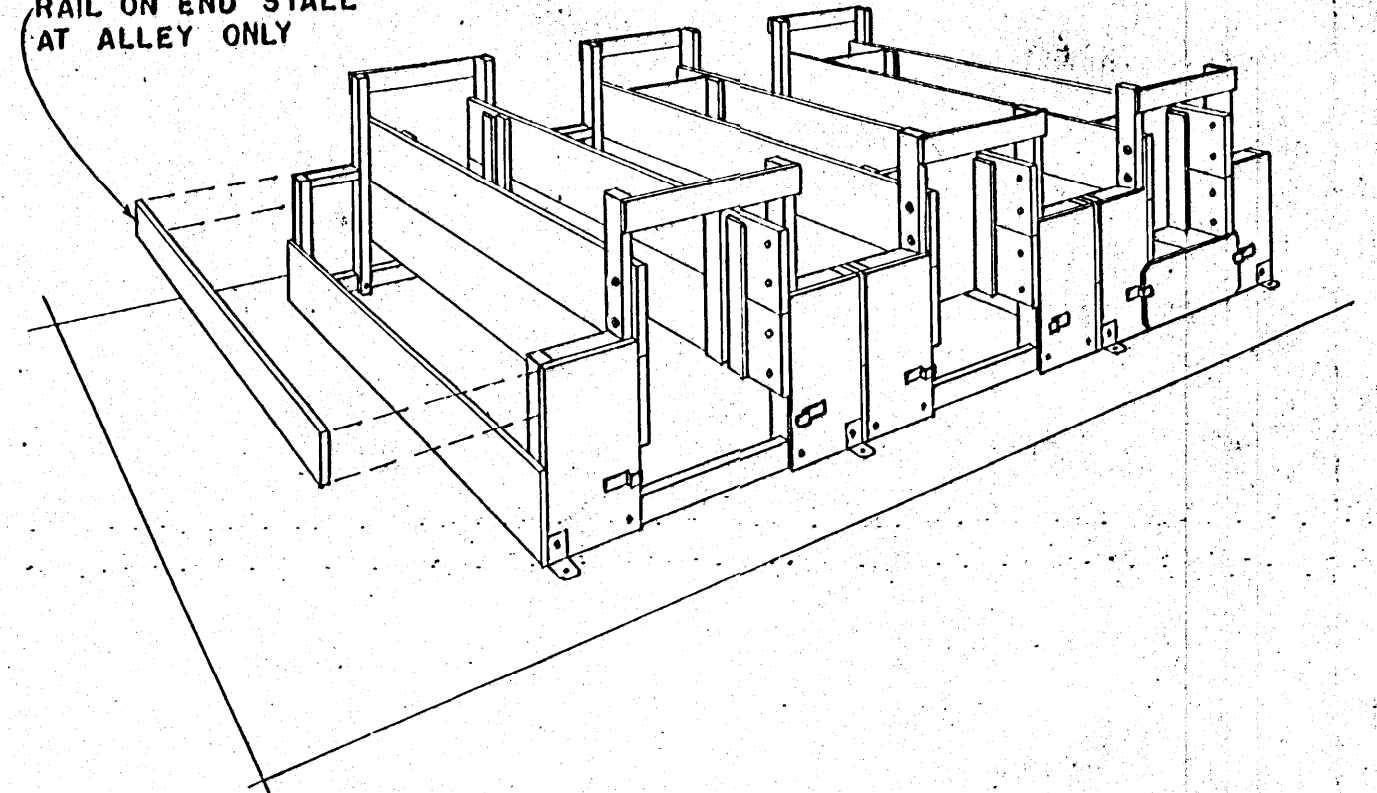


HEAD & TAIL PANELS

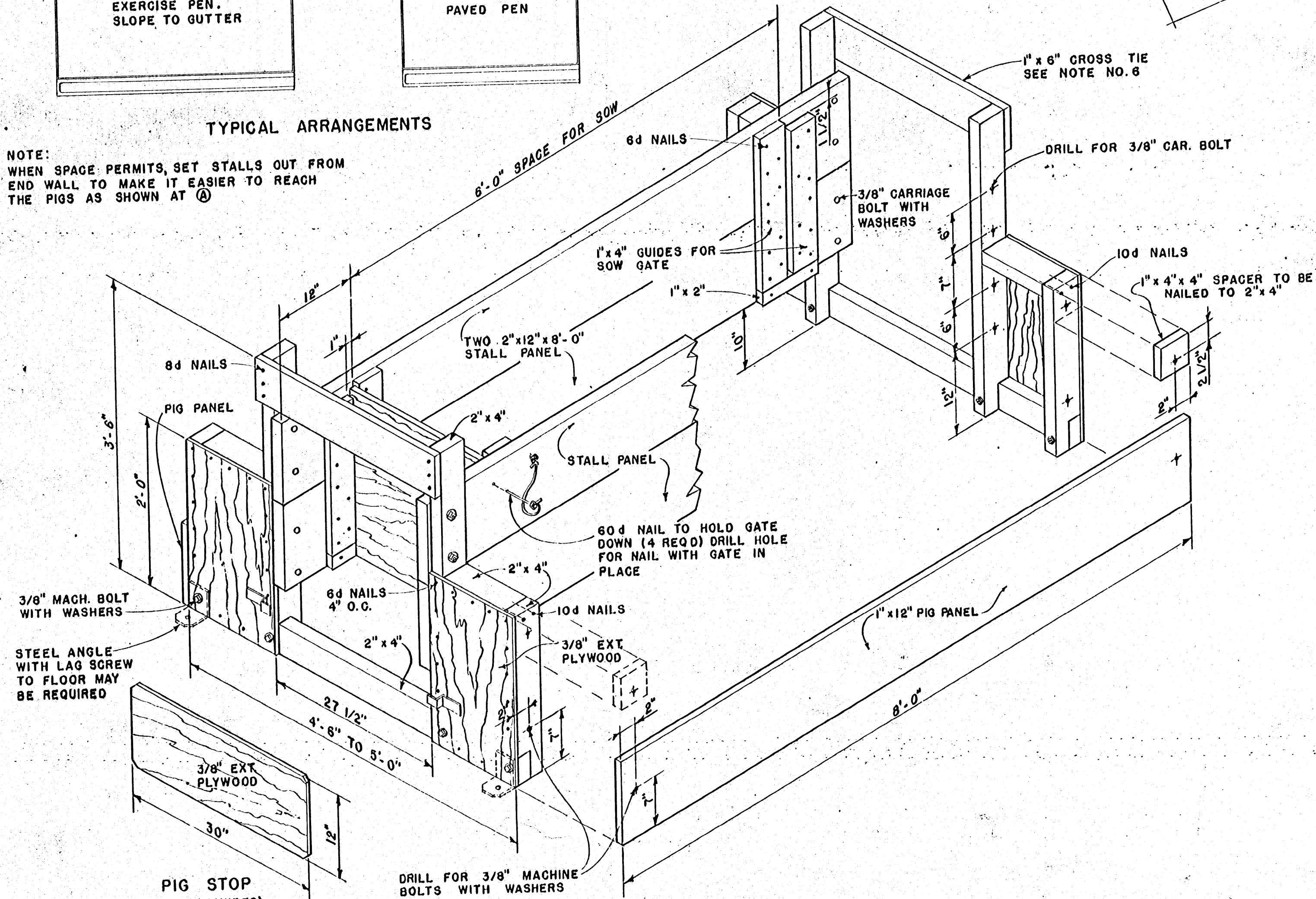


RAIL ON END STALL AT ALLEY ONLY



TYPICAL ARRANGEMENTS

NOTE:
WHEN SPACE PERMITS, SET STALLS OUT FROM END WALL TO MAKE IT EASIER TO REACH THE PIGS AS SHOWN AT (A)



NOTE:

1. 2" x 4" UPRIGHTS AND BASE OF THE END FRAMES SHOULD BE TREATED WITH PRESERVATIVE.
2. STALLS MAY BE SET UP IN ANY SUITABLE BLDG. A CONCRETE FLOOR IS RECOMMENDED.
3. THE SOW SHOULD BE PLACED IN THE STALL SEVERAL DAYS BEFORE FARROWING SO SHE CAN BECOME ACCUSTOMED TO HER SURROUNDINGS.
4. SOWS ARE TAKEN OUT OF THE STALLS FOR FEED, WATER AND EXERCISE.
5. THESE STALLS MAY BE DISASSEMBLED FOR STORAGE BY UNBOLTING THE STALL SIDES AND PIG PANELS. TO INSURE EASE OF REASSEMBLY IT IS ADVISABLE TO NUMBER THE PARTS OF EACH STALL.
6. IF THE STALLS ARE TO BE LEFT IN PLACE, THE 2" x 4" UPRIGHTS NEED NOT EXTEND ABOVE THE STALL SIDES AND THE 1" x 6" CROSS TIE WILL NOT BE NEEDED.

COOPERATIVE EXTENSION WORK IN
AGRICULTURE AND HOME ECONOMICS
STATE OF MISSISSIPPI
MISSISSIPPI STATE UNIVERSITY
AND
UNITED STATES DEPARTMENT OF AGRICULTURE COOPERATING

WOOD - FRAMED
FARROWING STALL

USDA '56 EX. 5828 SHEET 1 OF 1

VIEW SHOWING CONSTRUCTION