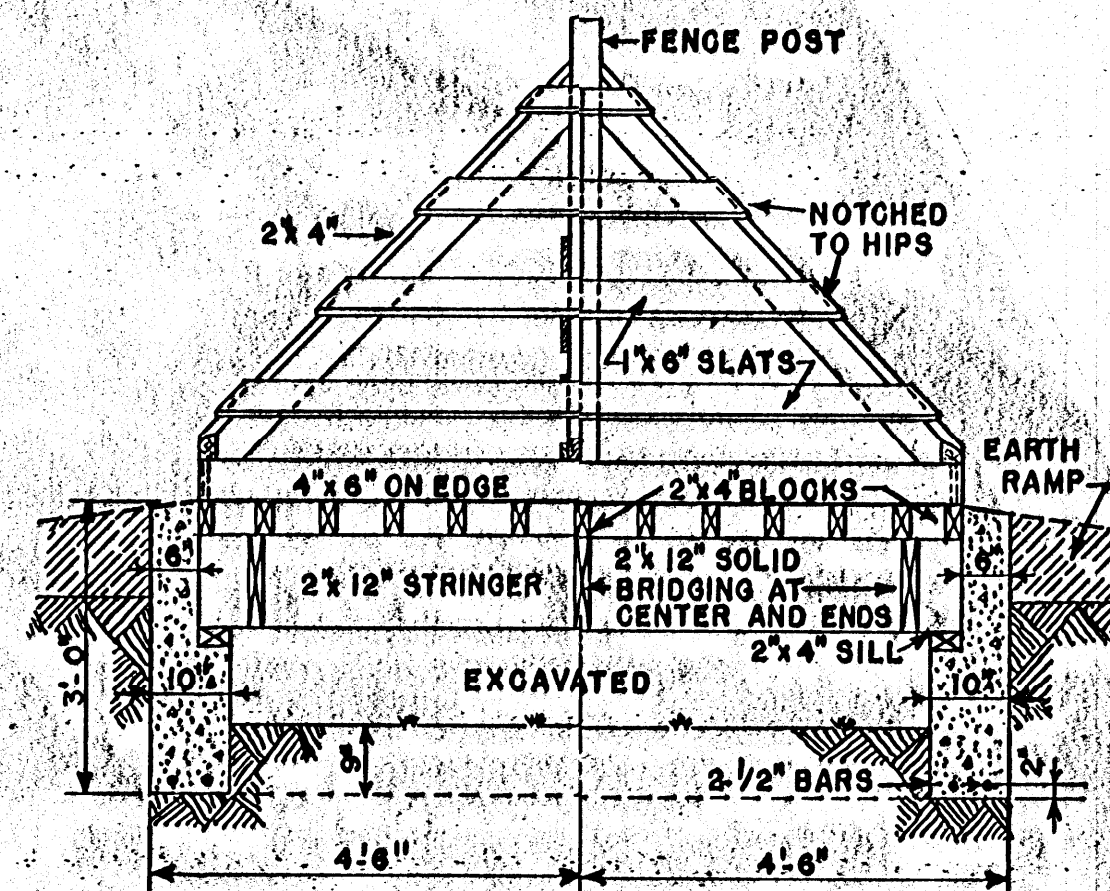


SECTION A-A



SECTION B-B

SECTION A-A, SHOWS GUARD FLOOR BUILT LEVEL WITH GRADE

SECTION B-B, SHOWS GUARD FLOOR RAISED ABOVE GRADE

**BILL OF MATERIAL**

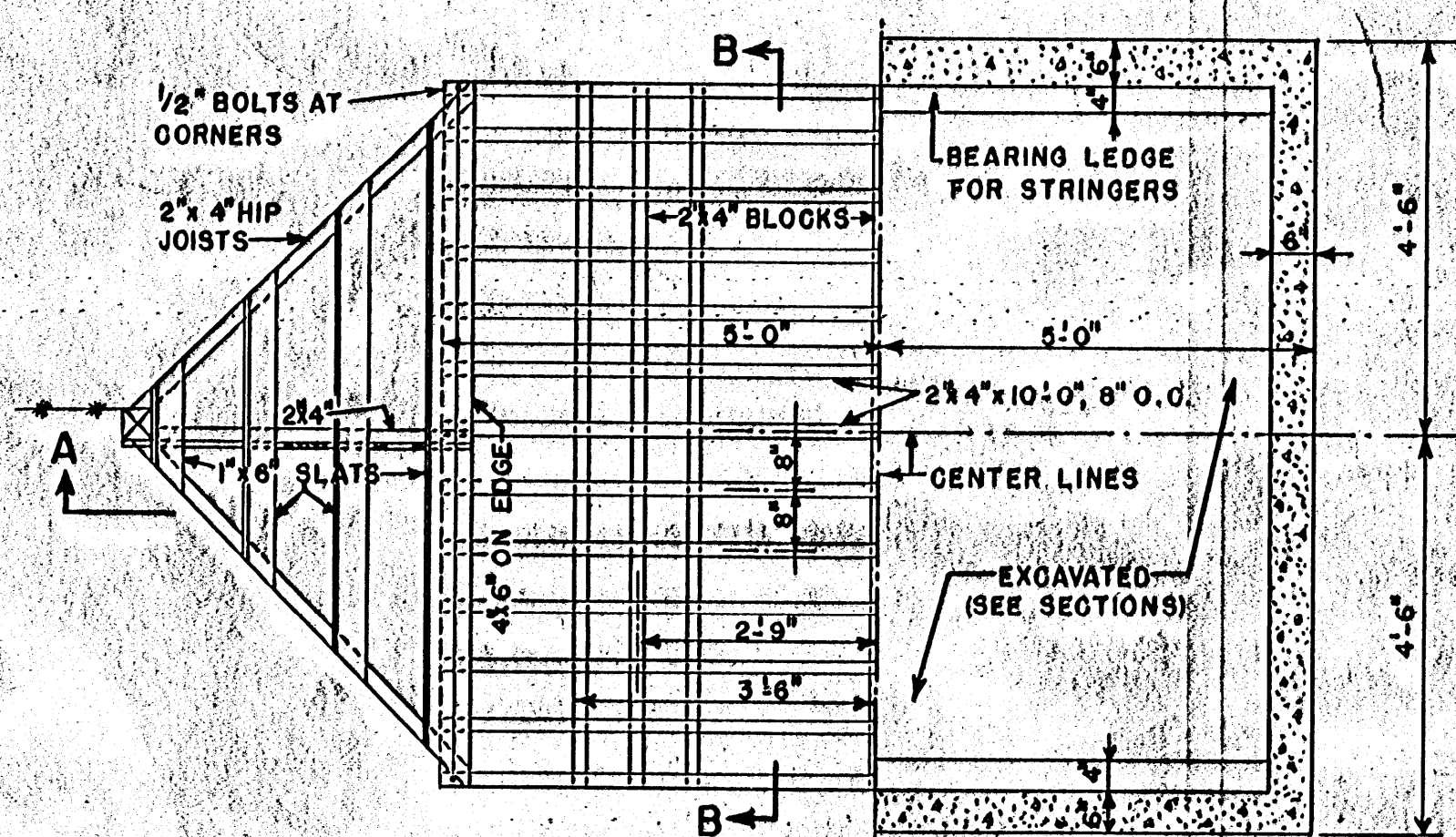
**LUMBER**

- FENCE POSTS: 2-POS 4"x4"x7'-0"
- FRAMING: 3-PCS 2"x12"x10'-0"
- 7-PCS 2"x12"x8'-0"
- 13-PCS 2"x4"x10'-0"
- 2-PCS 2"x4"x9'-0"
- 3-PCS 2"x4"x8'-0"
- 6-PCS 2"x4"x6'-0"
- 9-PCS 1"x6"x8'-0"
- GUARD RAILS: 2-PCS 4"x6"x8'-0"
- CONCRETE: 2 1/2 CU. YDS. (1:3:5 MIXTURE)
- CEMENT: 12 SACKS
- SAND: 1.25 CU. YDS.
- AGGREGATE: 2.13 CU. YDS.
- MISCELLANEOUS: ANCHOR BOLTS: 4-1/2"Øx12" GALVANIZED
- REINFORCING RODS: 4-1/2"Øx9'-9"
- 2-1/2"Øx8'-9"

**NOTE:**

TIMBERS IN CONTACT WITH EARTH OR CONCRETE ARE TO BE PRESERVED WITH PRESERVATIVE.

SCALE: 1/2" = 1'-0"



1/2 OF PLAN

1/2 OF FOUNDATION

COOPERATIVE EXTENSION WORK IN  
 AGRICULTURE AND HOME ECONOMICS  
 STATE OF MISSISSIPPI  
 MISSISSIPPI STATE UNIVERSITY  
 UNITED STATES DEPARTMENT OF AGRICULTURE COOPERATING

**CATTLE GUARD**  
 CONCRETE AND WOOD

USDA '60 EX. 5904 SHEET 1 OF 1