

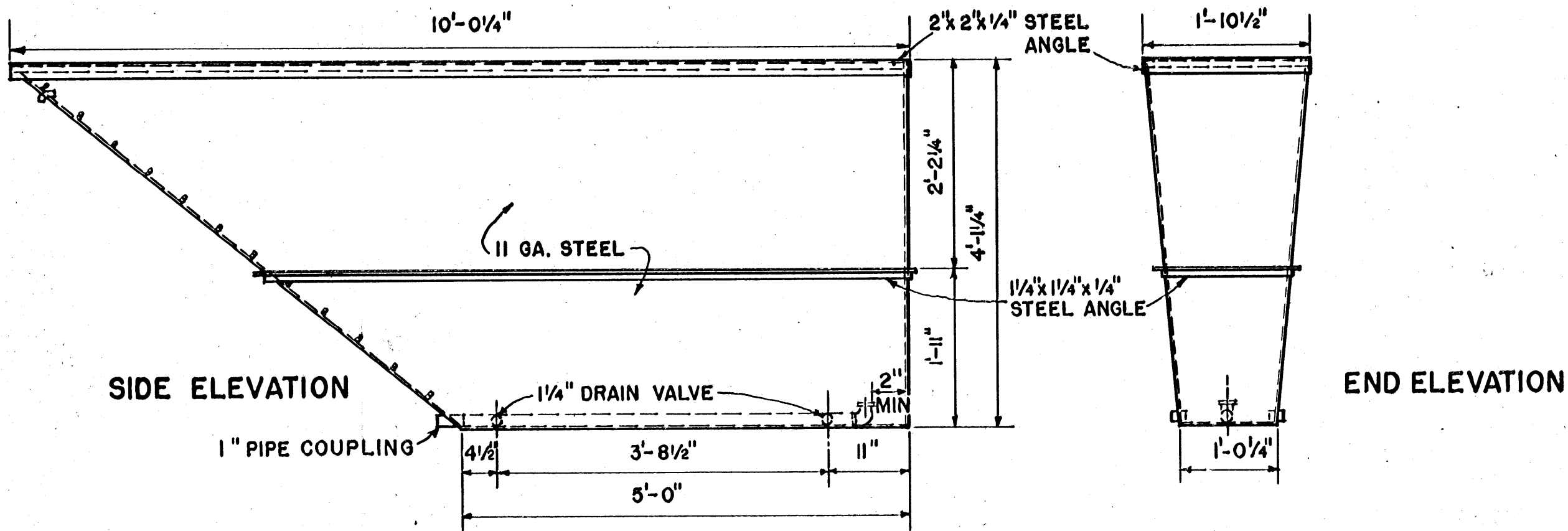
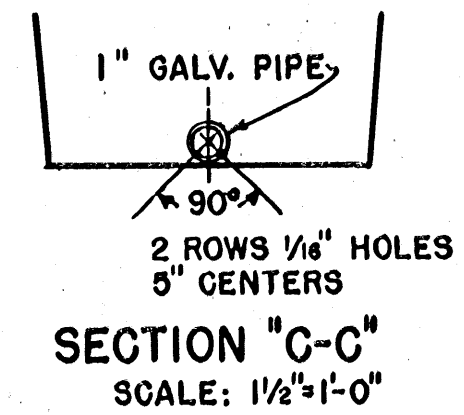
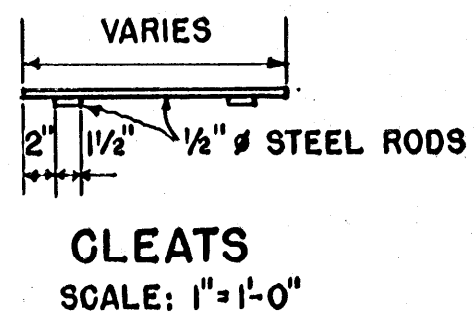
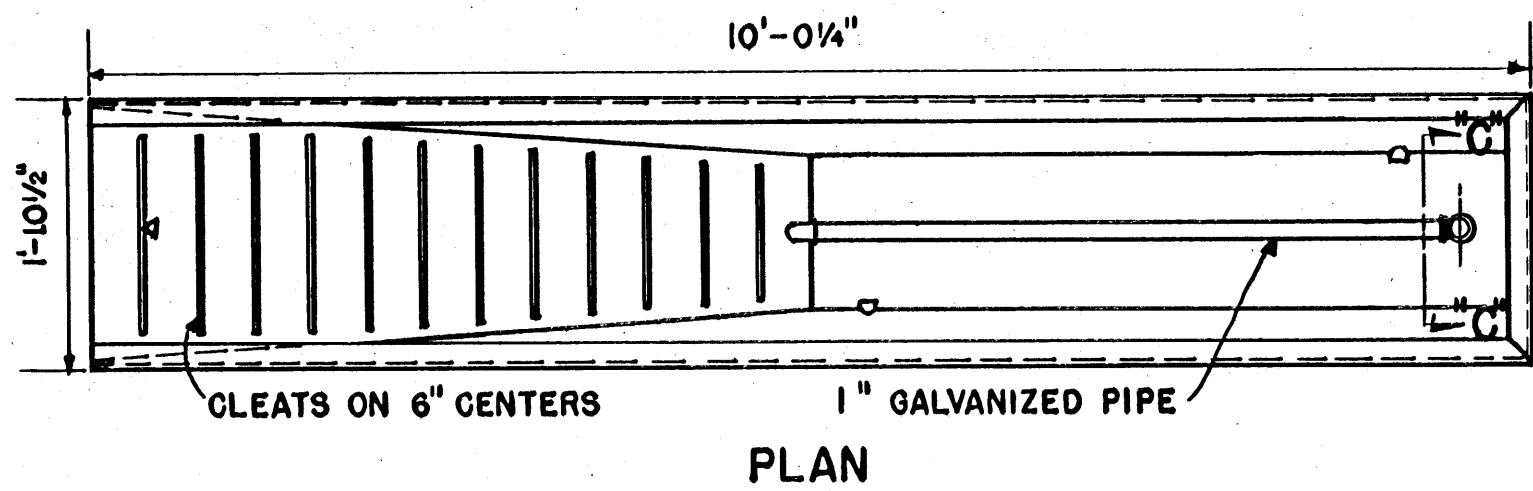
SCALE: 1/2" = 1'-0" UNLESS OTHERWISE NOTED.

COOPERATIVE EXTENSION WORK IN AGRICULTURE AND HOME ECONOMICS
STATE OF MISSISSIPPI
MISSISSIPPI STATE UNIVERSITY
AND
UNITED STATES DEPARTMENT OF AGRICULTURE COOPERATING

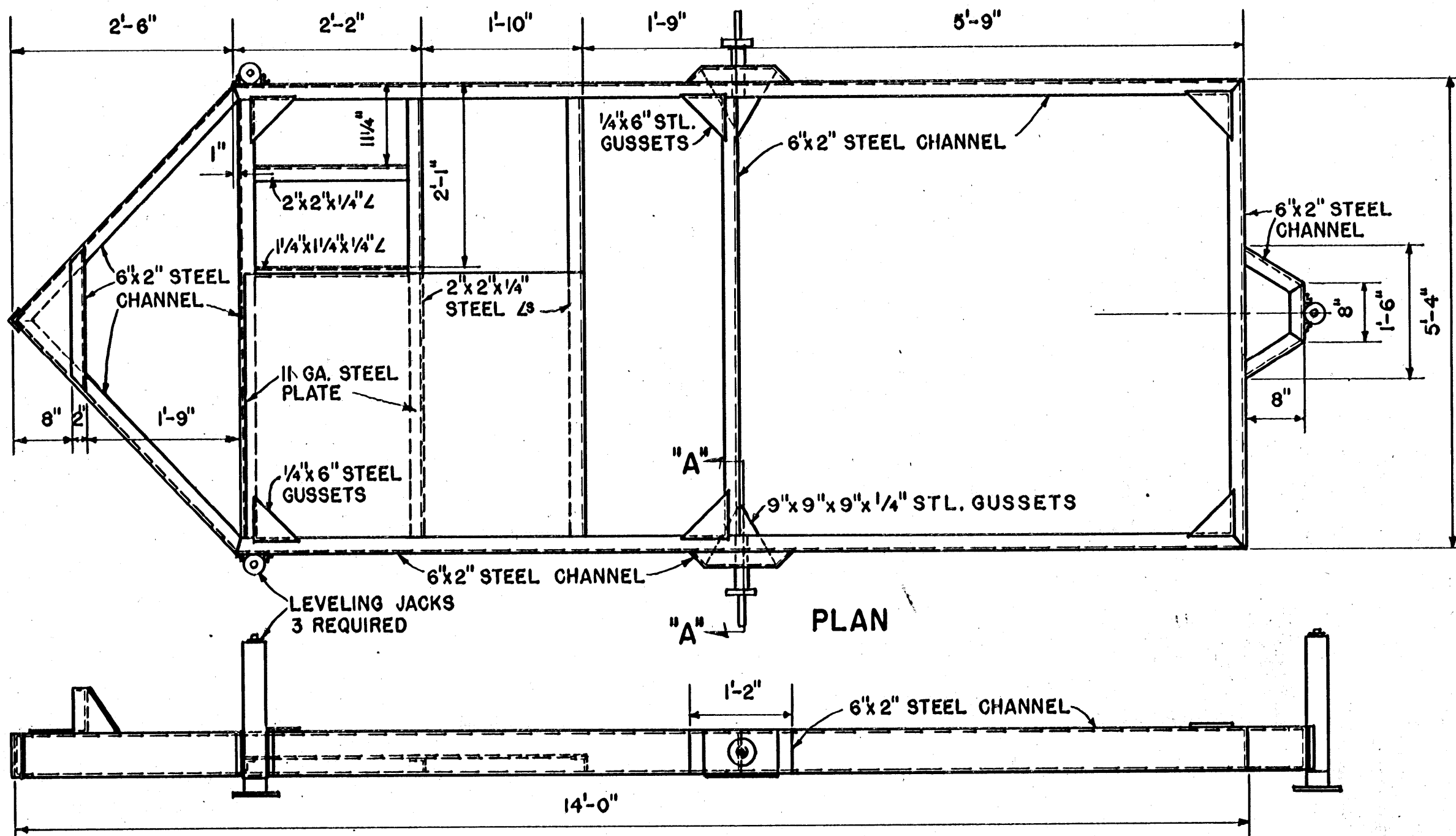
PORTABLE DIPPING VAT FOR SHEEP

USDA '66	EX. 5999	SHEET 1 OF 3
----------	----------	--------------

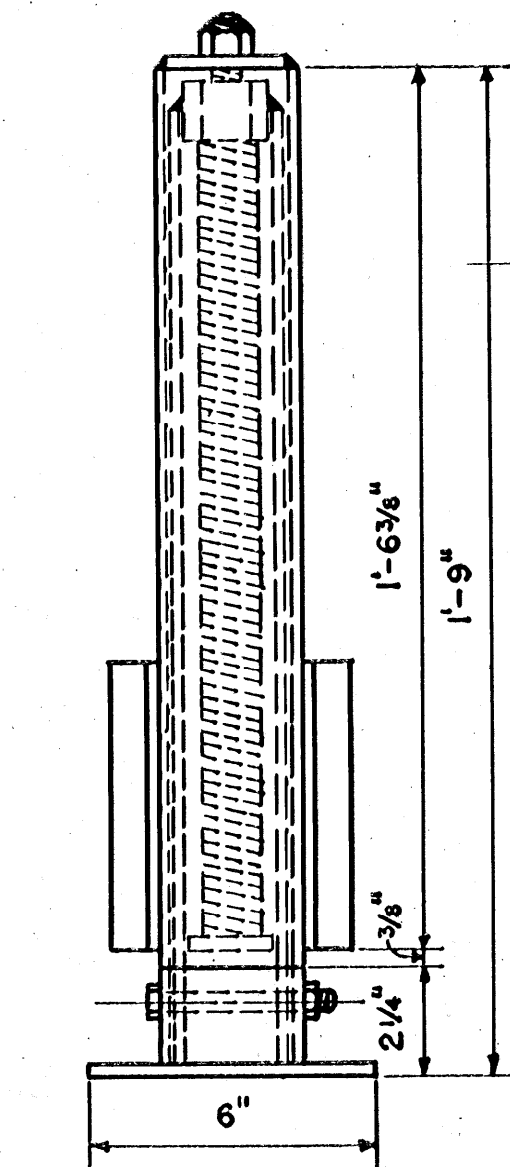
NOTE: DEVELOPED AND BUILT BY TECHNICAL SERVICES, ANIMAL HEALTH DIVISION, ARS, USDA, THRU MODIFICATION OF PREL. PLANS, PENN. ST. UNIV.



DETAILS OF DIPPING TANK

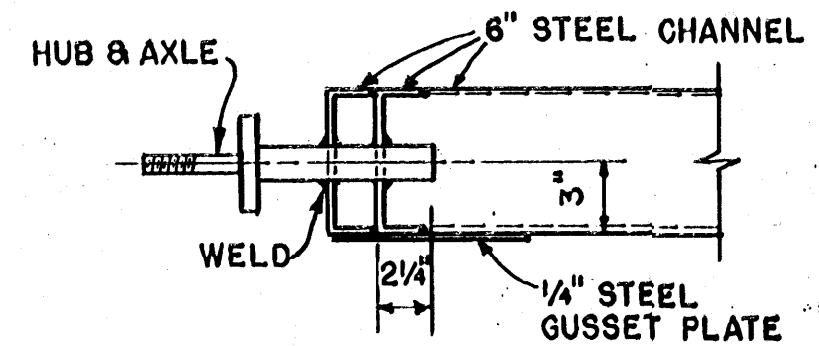


SIDE ELEVATION
DETAILS OF TRAILER FRAME



**MATERIAL LIST
LEVELING JACKS
(PER JACK)**

- 1-2 1/2" GALV. PIPE 18 3/4" LG.
- 1-2 1/2" GALV. PIPE 2" LG.
- 1-2" GALV. PIPE 19 3/4" LG.
- 1-1/4" x 4" x 6" STEEL PLATE
- 1-3/8" x 3 1/2" BOLT
- 1-1/4" SQ. THREAD SHAFT 19 1/4" LG.
- 1-1/4" SQ. THREAD NUT
- 1-5/8" NUT
- 1-1/4" x 1 3/4" DIAMETER STOP
- 1-1/4" x 2 1/2" DIAMETER STOP
- 2-1" x 1 1/4" STEEL ANGLE

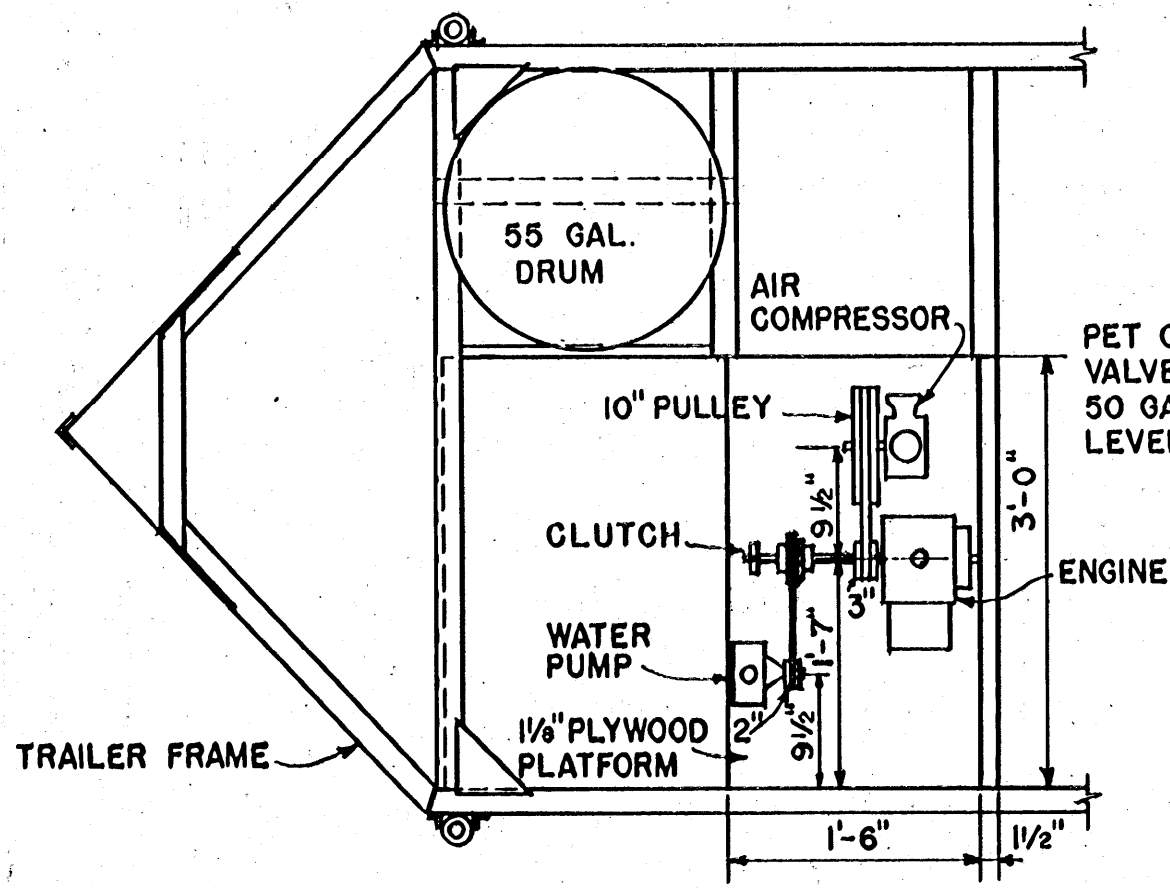


SECTION "A-A"
SCALE: 1 1/2" = 1'-0"

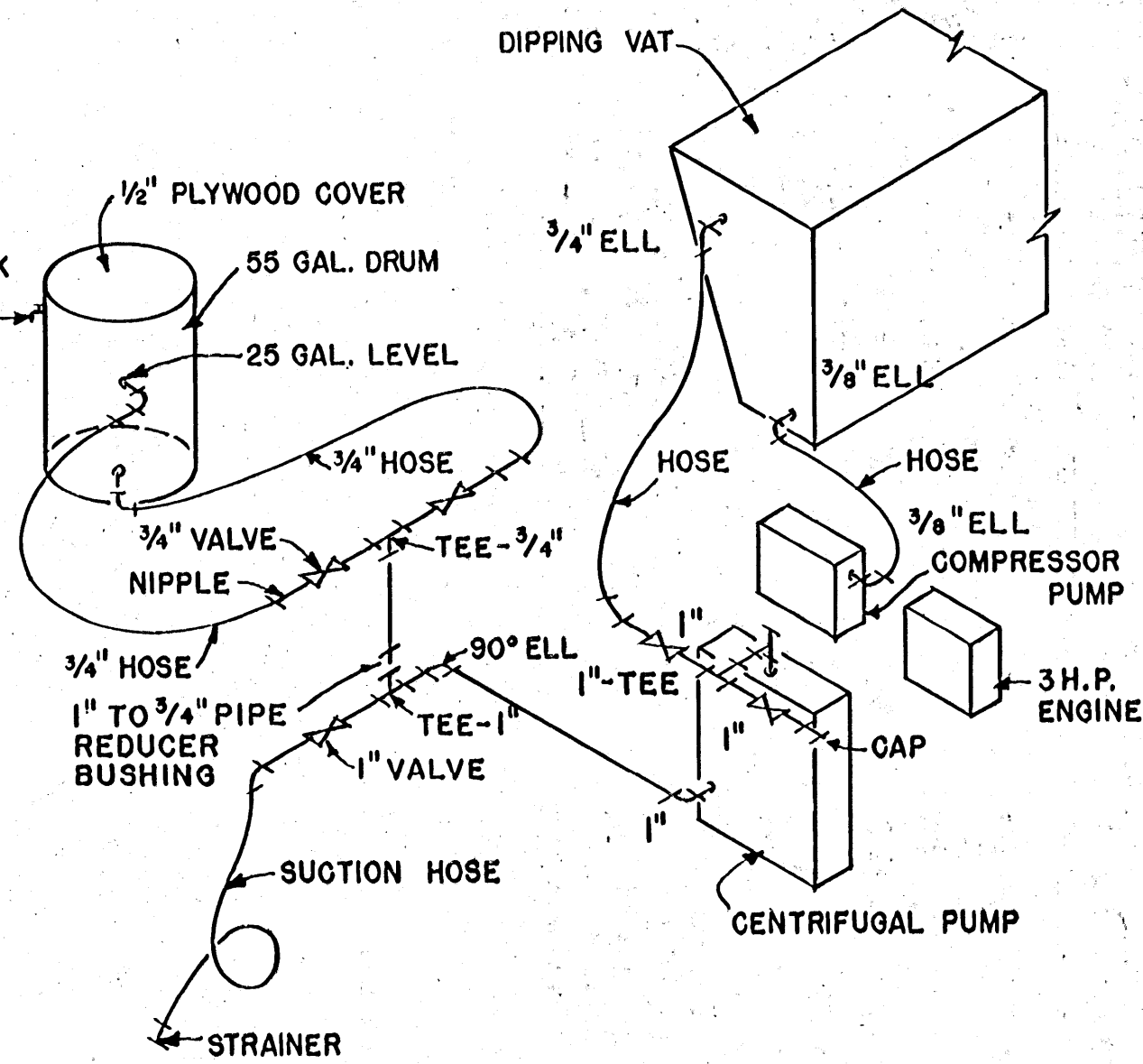
COOPERATIVE EXTENSION WORK IN
AGRICULTURE AND HOME ECONOMICS
STATE OF MISSISSIPPI
MISSISSIPPI STATE UNIVERSITY
AND
UNITED STATES DEPARTMENT OF AGRICULTURE COOPERATING

**PORTABLE DIPPING VAT
FOR SHEEP**

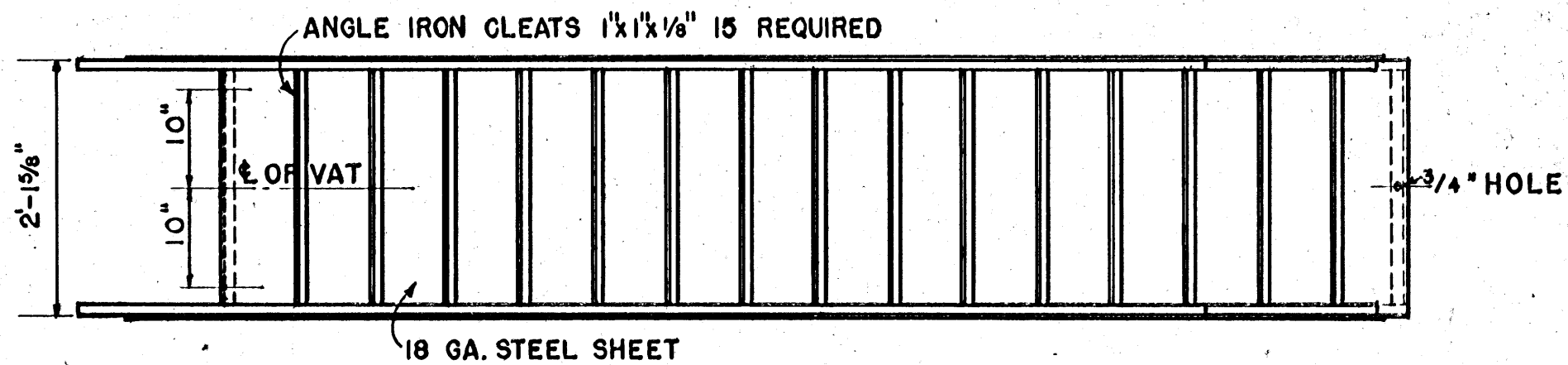
USDA '66 EX. 5999 SHEET 2 OF 3



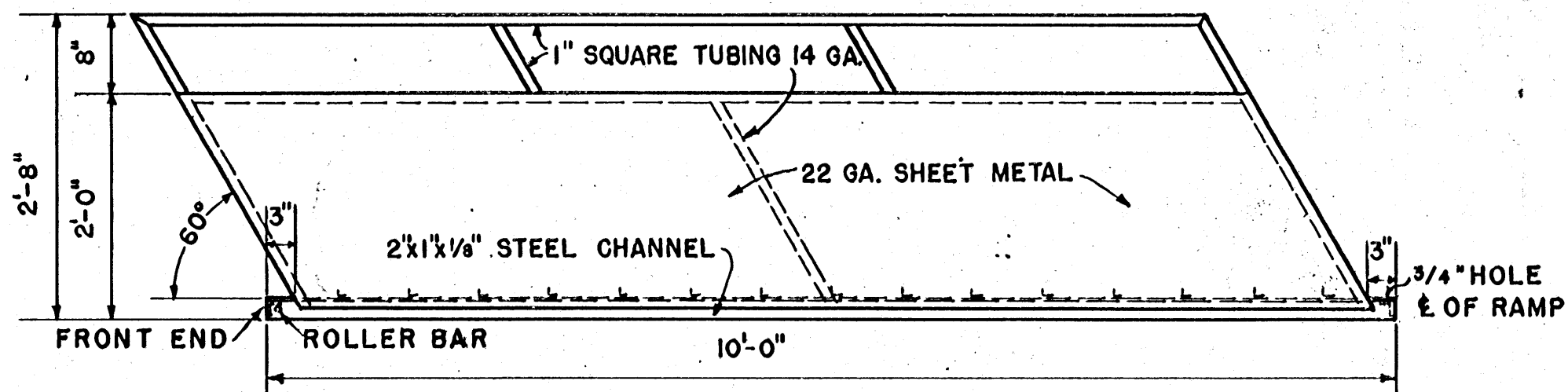
PLAN
SHOWING LOCATION OF ENGINE,
PUMP, COMPRESSOR, & DRUM



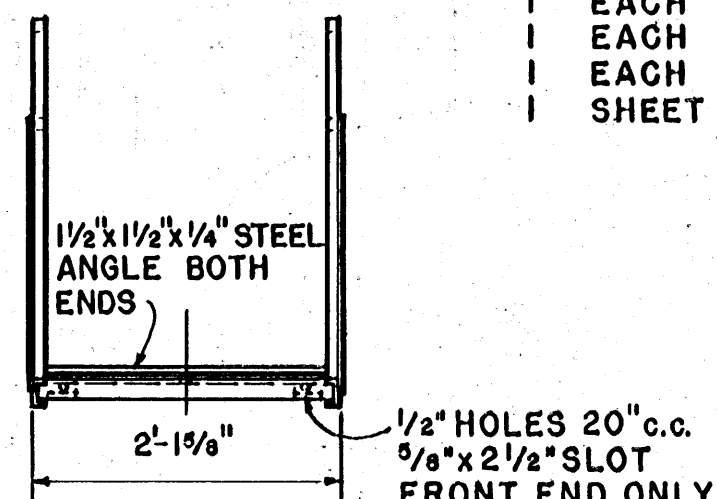
**ISOMETRIC OF
PLUMBING LAYOUT**
NO SCALE



PLAN OF UP RAMP



SIDE ELEVATION



END ELEVATION

MATERIAL LIST

- | | | |
|-----|--------|--|
| 4 | SHEETS | 11 GA. MILD STEEL 4'x10' |
| 1 | SHEET | 18 GA. MILD STEEL 4'x8' |
| 5 | SHEETS | 22 GA. MILD STEEL 4'x8' |
| 1 | SHEET | 11 GA. MILD STEEL CHECKERED PLATE 4'x8' |
| 3 | PIECES | MILD STEEL CHANNEL IRON 6x2x20x1/4" |
| 2 | PIECES | MILD STEEL CHANNEL IRON 2x1x20x1/8" |
| 4 | PIECES | MILD STEEL ANGLE IRON 1x1x1/8x20' |
| 4 | PIECES | MILD STEEL ANGLE IRON 2x2x1/4x20' |
| 4 | PIECES | MILD STEEL ANGLE IRON 1 1/4x1 1/4x1/4x20' |
| 1 | PIECES | MILD STEEL BAR STOCK 1/4x1/2x20' |
| 1 | PIECE | MILD STEEL BAR STOCK 1/2x1 1/2x4' |
| 1 | PIECE | MILD STEEL BAR STOCK 1/4x6x10' |
| 1 | SHEET | EXPANDED METAL (4 LBS. PER FOOT) 4'x8' |
| 14 | PIECES | 1" SQUARE TUBING, 14 GA. x 20' |
| 3 | PIECES | 1/2" SQUARE TUBING, 14 GA. x 20' |
| 2 | PIECE | 1/2" ROUND ROD 20' |
| 1 | PIECE | 1/4" ROUND ROD 20' |
| 1 | LENGTH | GALVANIZED PIPE 1"x21' |
| 3 | EACH | 1" PIPE, GALVANIZED, ELBOW 90° |
| 2 | EACH | 1" PIPE, GALVANIZED, CAP |
| 2 | EACH | 1" PIPE, GALVANIZED, TEE |
| 1 | EACH | 1" TO 3/4" PIPE REDUCER BUSHING |
| 3 | EACH | 1" PIPE, GALVANIZED, NIPPLES 3" |
| 1 | EACH | 1" GLOBE VALVE & 1" CHECK VALVE |
| 2 | EACH | 1 1/2" GLOBE VALVE |
| 1 | LENGTH | 1" SUCTION HOSE WITH COUPLINGS 15' LONG |
| 1 | LENGTH | 3/4" HEAVY DUTY HOSE 25' LONG |
| 1 | EACH | 55 GAL. DRUM & 1 MANUAL CLUTCH (DISC.) |
| 1 | EACH | CENTRIFUGAL PUMP, SELF PRIMING, 25 GAL. PER MIN. |
| 1 | EACH | 3 H.P. ENGINE & 4 ENGINE MTG. PADS (NO. 8 RUB. CORK) |
| 1 | EACH | V-BELT & 1 EA. 2" V BELT PULLEY WHEEL 3/4" BORE |
| 1 | EACH | COMPRESSOR PUMP, AIR, 3 CU. FT. PER MIN. |
| 1 | EACH | AXEL SPINDLE 3/4"x7 1/2" |
| 1 | EACH | FREE ROLL HUB 3/4" BORE I.D. |
| 1 | EACH | WHEEL, TIRE AND TUBE, 10" DIA. |
| 1 | EACH | TRAILER HITCH, HEAVY DUTY, 5000 LB. GROSS |
| 1 | EACH | SAFETY CHAIN 5/16"x10' LG. WITH 2 HOOKS |
| 1 | KIT | STOPLIGHT AND TURN SIGNAL KIT |
| 2 | EACH | 3" REFLECTORS |
| 1 | EACH | COIL 16 GA. PLASTIC COVERED AUTO WIRE |
| 6 | EACH | HOSE CLAMP 3/4" |
| 3 | EACH | HOSE CLAMP 1" |
| 2 | EACH | WHEEL, TIRE AND TUBE, 600 x 16"x 6 PLY |
| 2 | EACH | AXEL SPINDLE |
| 2 | EACH | HUB |
| 3 | BOXES | WELDING ELECTRODE 1/8" AC OR DC, 10 LB. |
| 2 | BOXES | WELDING ELECTRODE 5/32" AC OR DC, 10 LB. |
| 1 | PIECE | 1" PLASTIC PIPE 5' LONG |
| 6 | QUARTS | RED LEAD PRIMER PAINT, 1 QT. EPOXY PRIMER, PAINT |
| 300 | EACH | POP RIVETS 1/8" DIA. x 1/4" LONG |
| 100 | EACH | POP RIVETS 1/8" DIA. x 3/8" LONG |
| 2 | PAIR | HINGES, HEAVY DUTY 8" T |
| 2 | PAIR | HINGES, HEAVY DUTY 4"x6" BUTT |
| 1 | PAIR | HINGES, HEAVY DUTY 2"x2" BUTT |
| 1 | PAIR | HINGES, HEAVY DUTY 4" T |
| 1 | EACH | HASP 4" |
| 1 | EACH | 3/4" GALV. PIPE NIPPLE 4" LONG |
| 2 | EACH | 3/4" GALV. PIPE NIPPLE 2" LONG |
| 3 | EACH | 3/4" GLOBE VALVES |
| 1 | EACH | 3/4" GALV. PIPE TEE |
| 4 | EACH | 3/4" GALV. PIPE COUPLING |
| 4 | EACH | 3/4" GALV. PIPE TO HOSE COUPLING |
| 1 | EACH | 3/8" GALV. PIPE 90° ELL |
| 1 | EACH | 3/8" GALV. PIPE NIPPLE 2" LONG |
| 2 | EACH | 1 1/2" GALV. PIPE COUPLING 2" LONG |
| 1 | EACH | 1" GALV. PIPE COUPLING |
| 1 | EACH | REMOTE CONTROL THROTTLE |
| 1 | EACH | RUBBER WEATHERSTRIPPING 5/16"x3/4"x8' |
| 1 | SHEET | EXTERIOR PLYWOOD 1/2"x4'x8' |

SCALE: 3/4"=1'-0" UNLESS OTHERWISE NOTED.

COOPERATIVE EXTENSION WORK IN AGRICULTURE AND HOME ECONOMICS STATE OF MISSISSIPPI MISSISSIPPI STATE UNIVERSITY AND UNITED STATES DEPARTMENT OF AGRICULTURE COOPERATING		
PORTABLE DIPPING VAT FOR SHEEP		
USDA '66	EX. 5999	SHEET 3 OF 3