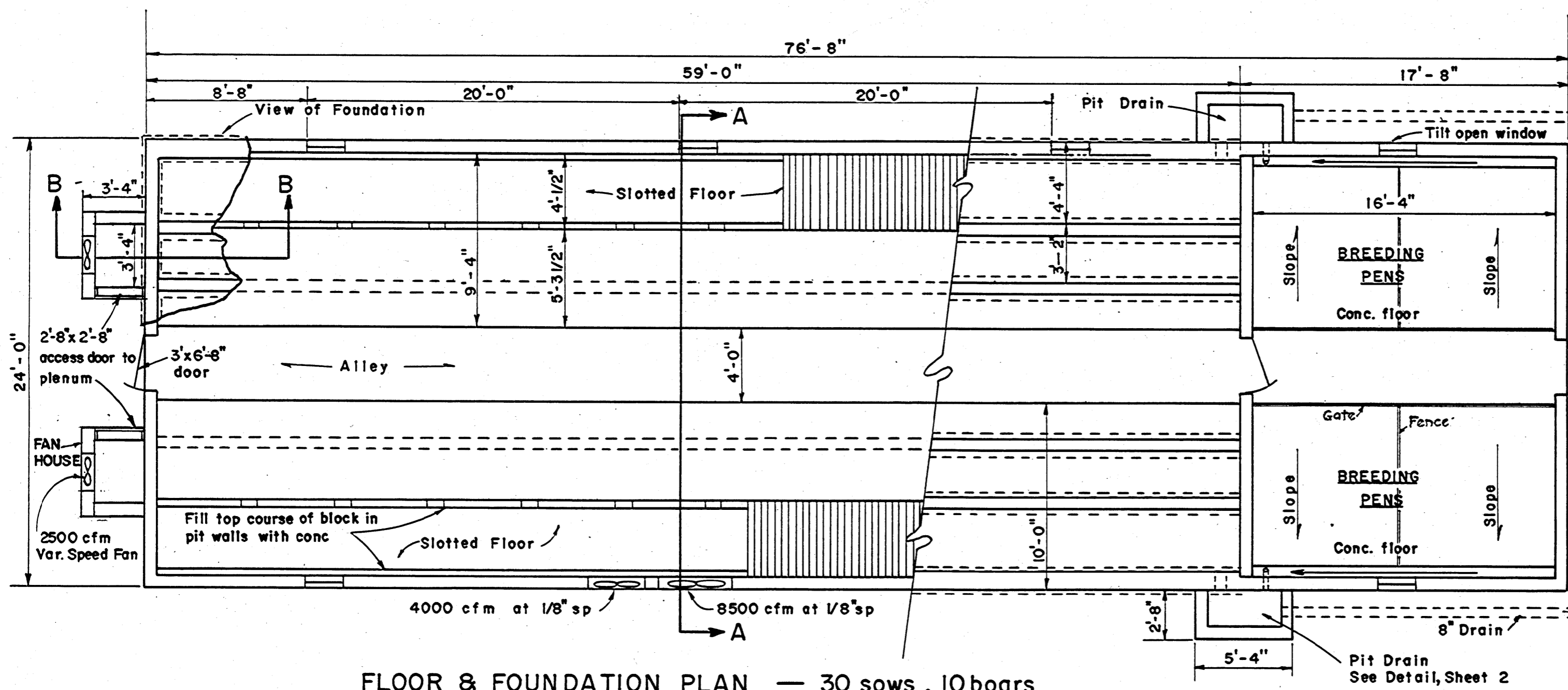


NOTE 1:  
Velocity of conditioned air exiting flexible duct at stall must be 800 to 1000 ft. per min.

SECTION A-A  
12' 0' 1' 2'

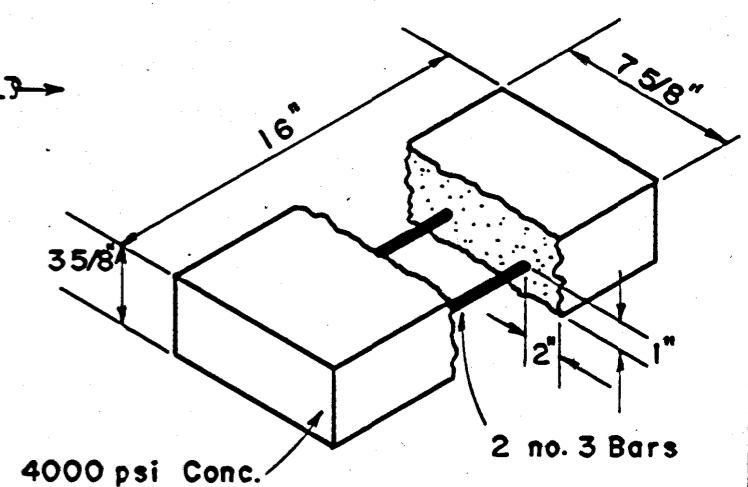
SECTION B-B, FAN HOUSE & DUCT  
12' 0' 1' 2'



FLOOR & FOUNDATION PLAN — 30 sows, 10 boars

SCALE - 3/16" = 1'-0"  
12' 0' 1' 2' 3' 4' 5'

NOTE: CONSULT LOCAL HEALTH AND BUILDING CODE AUTHORITIES BEFORE STARTING CONSTRUCTION.



CONC. LINTEL DETAIL

If gang slats are used, an 8" x 4" x 16" conc. block can be substituted for the above lintel.

SCALE: 3/8" = 1'-0" UNLESS OTHERWISE NOTED.

COOPERATIVE EXTENSION WORK IN  
AGRICULTURE AND HOME ECONOMICS  
STATE OF MISSISSIPPI  
MISSISSIPPI STATE UNIVERSITY  
AND  
UNITED STATES DEPARTMENT OF AGRICULTURE COOPERATING

SWINE BREEDING BUILDING  
CONTROLLED ENVIRONMENT

N.C. '75 6215 SHEET 1 OF 2

BASED ON: N. C. STATE UNIV. PLAN NO. 531

