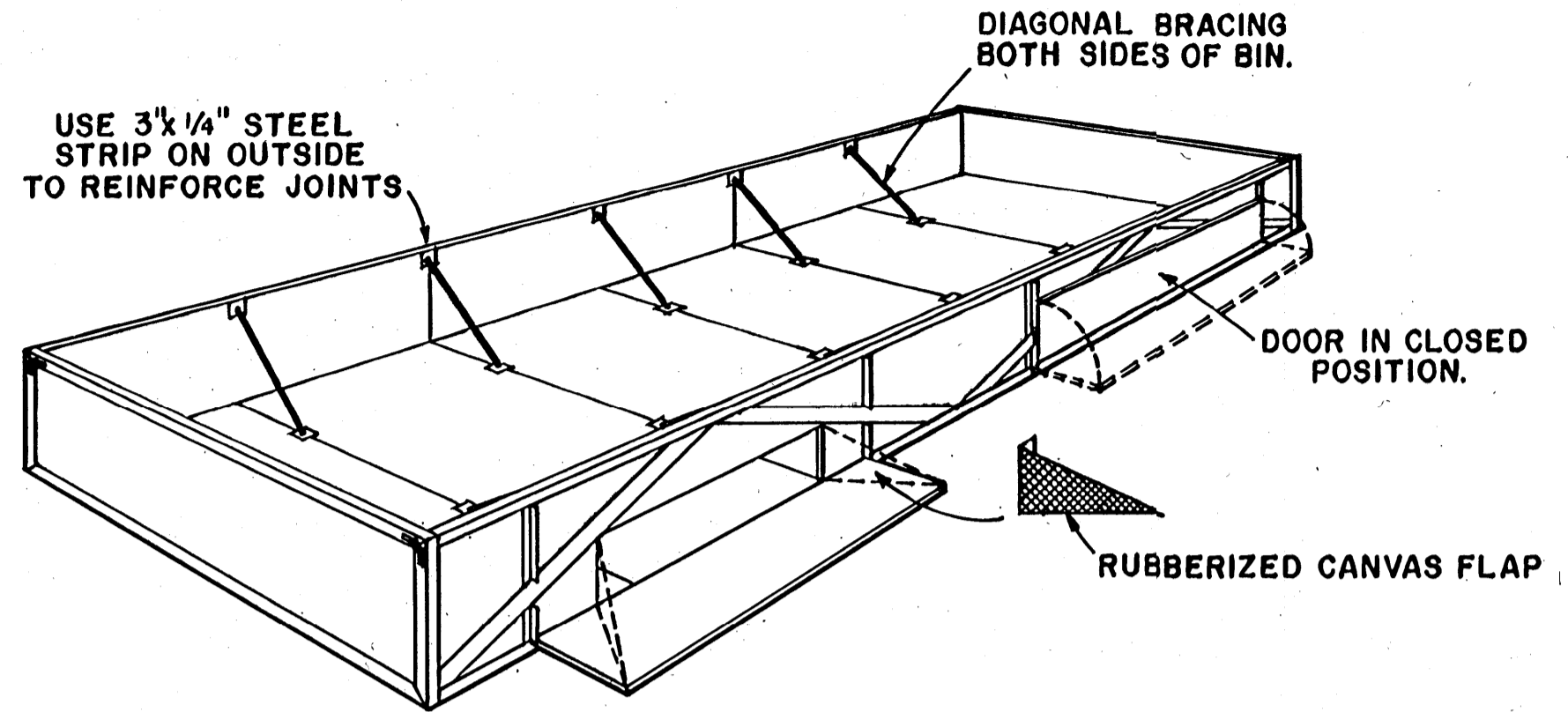


**HINGE DETAIL**  
SCALE: NONE

NOTE:  
FOR WATER-TIGHT CONSTRUCTION,  
APPLY WATERPROOF MASTIC TO  
ALL CORNERS BEFORE INSERTING  
PLYWOOD.

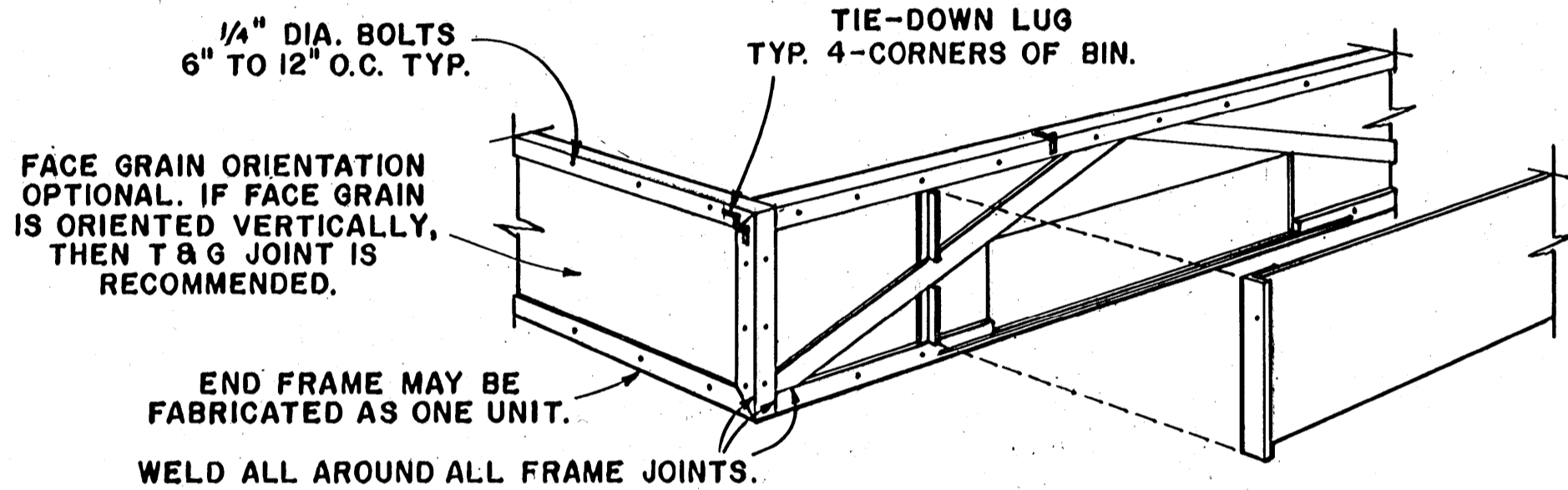


**PERSPECTIVE**

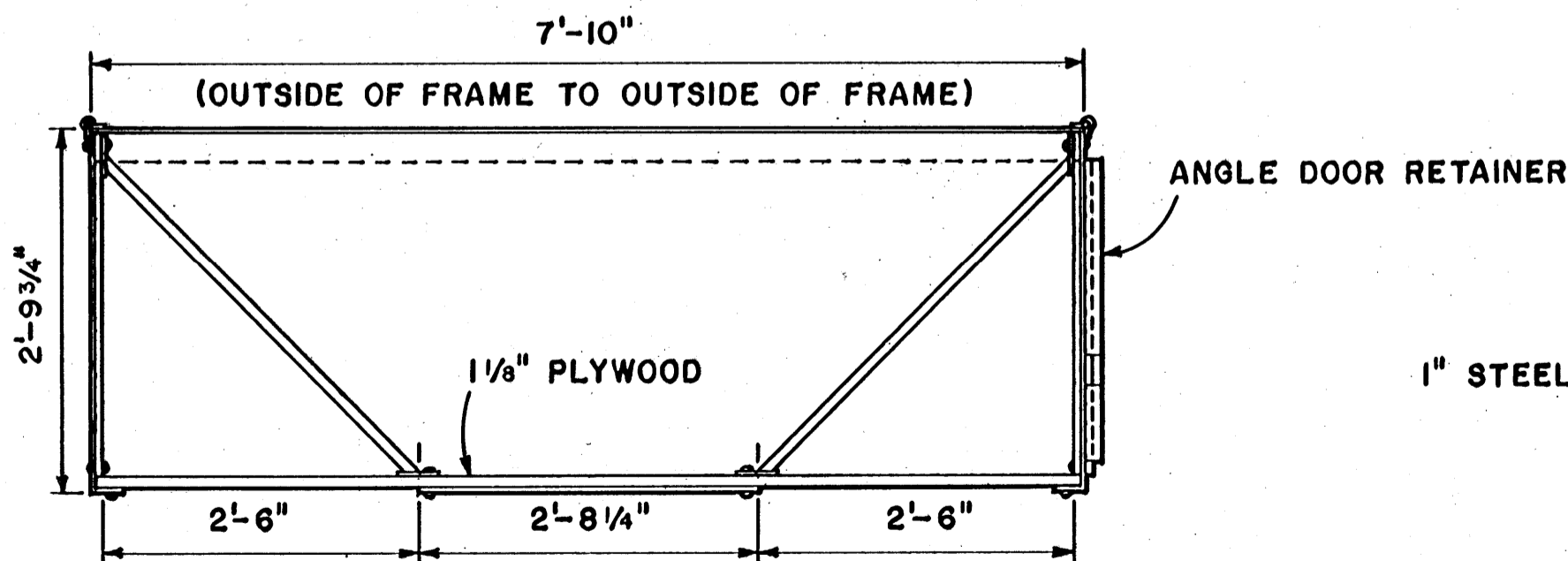
NOTE:  
THIS BIN IS INTENDED TO BE CARRIED ON A FLAT BED TRUCK OR  
TRUCK TRAILER. DIMENSIONS SHOWN WITHIN THIS PLAN ARE  
APPLICABLE TO A 24-FT. BIN. WITH MINOR MODIFICATIONS, THE  
LENGTH OF THIS BIN MAY BE VARIED TO SUIT OTHER TRUCK BED  
LENGTHS. THE OUTSIDE WIDTH IS INTENDED TO COMPLY WITH WIDTH  
REGULATIONS OF MOST STATES; HOWEVER, ONE MUST CONSIDER  
INDIVIDUAL STATE REGULATIONS AND BINDER DIMENSIONS BEFORE  
BUILDING.

CONSULT LOCAL CODE AUTHORITIES BEFORE STARTING CONSTRUCTION.

MENTION OF A TRADE NAME DOES NOT CONSTITUTE A GUARANTEE OR  
WARRANTY OF THE PRODUCT BY THE U.S. DEPARTMENT OF AGRICULTURE  
OR AN ENDORSEMENT BY THE DEPARTMENT OVER OTHER PRODUCTS NOT  
MENTIONED.

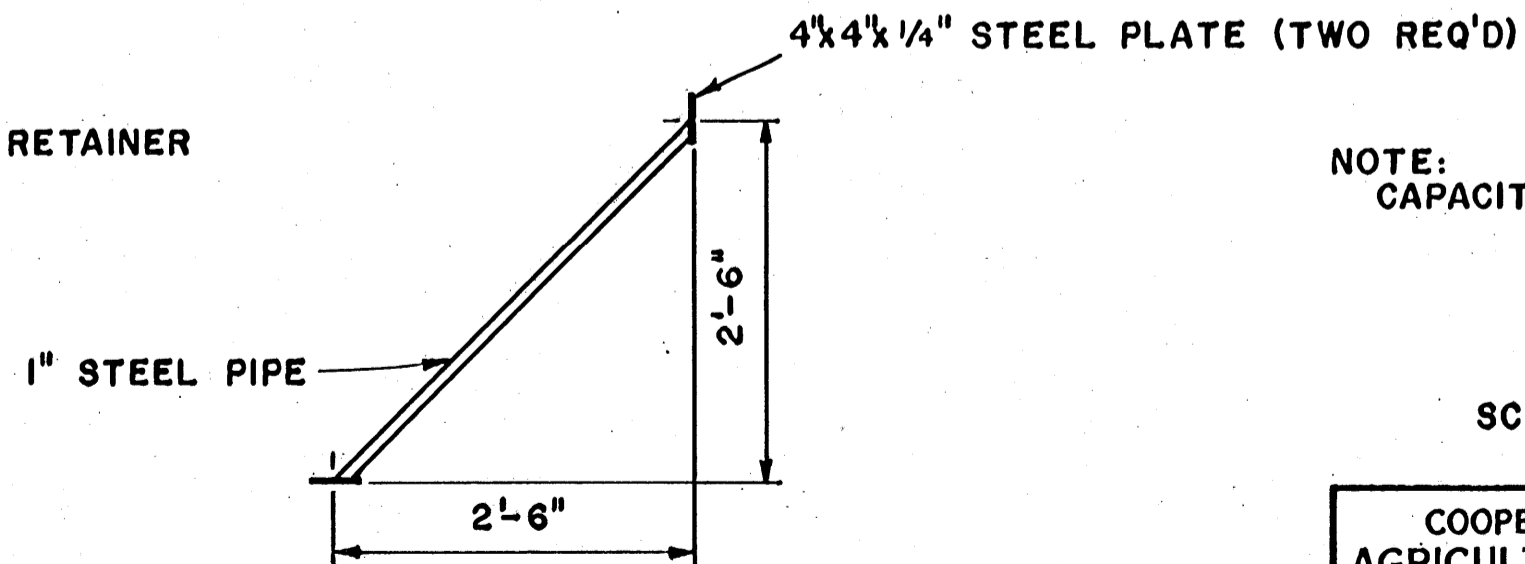


**FRONT CORNER DETAIL**  
SCALE: NONE



**SECTION "A-A"**

NOTE:  
7'-9 1/4" CUT LENGTH  
OF BOTTOM PANELS



**PIPE BRACE**  
(10 REQ'D)

NOTE:  
CAPACITY 490 CU. FT.

12" 6" 0 1'  
SCALE: 3/4" = 1'-0" UNLESS  
OTHERWISE NOTED.

COOPERATIVE EXTENSION WORK IN  
AGRICULTURE AND HOME ECONOMICS  
STATE OF MISSISSIPPI  
MISSISSIPPI STATE UNIVERSITY,  
AND  
UNITED STATES DEPARTMENT OF AGRICULTURE COOPERATING

**BULK HAULER**

APA '76 6263 SHEET 1 OF 2

### BASIC STEEL DIMENSIONS

1. USE  $3\frac{1}{2} \times 3\frac{1}{4}$ " STEEL ANGLE FOR ALL PERIPHERAL FRAMING.
2. USE  $3\frac{1}{4}$ " STEEL STRIP FOR ALL DIAGONAL FRAMING, FOR DIAGONAL BRACE TIES UNDER BIN BOTTOM, AND TO REINFORCE WALL JOINTS ON NON-OPENING SIDE OF BIN.
3. USE  $1\frac{1}{2} \times 1\frac{1}{2} \times \frac{1}{8}$ " STEEL ANGLE FOR VERTICAL DOOR RETAINERS.
4. DOOR SILLS WILL BE CUT SO AS TO BE EVEN WITH THE SURFACE OF THE BIN FLOOR.
5. ALL STEEL WORK TO BE COATED WITH GOVERNMENT AGENCY-APPROVED COATING FOR FOOD HANDLING.

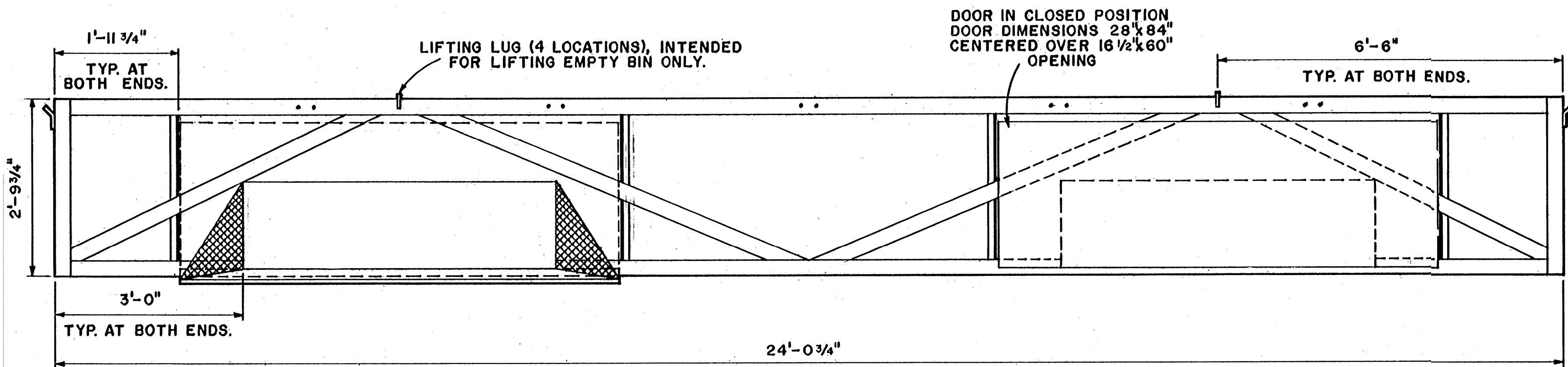
### PLYWOOD SPECIFICATIONS

#### BIN SIDES

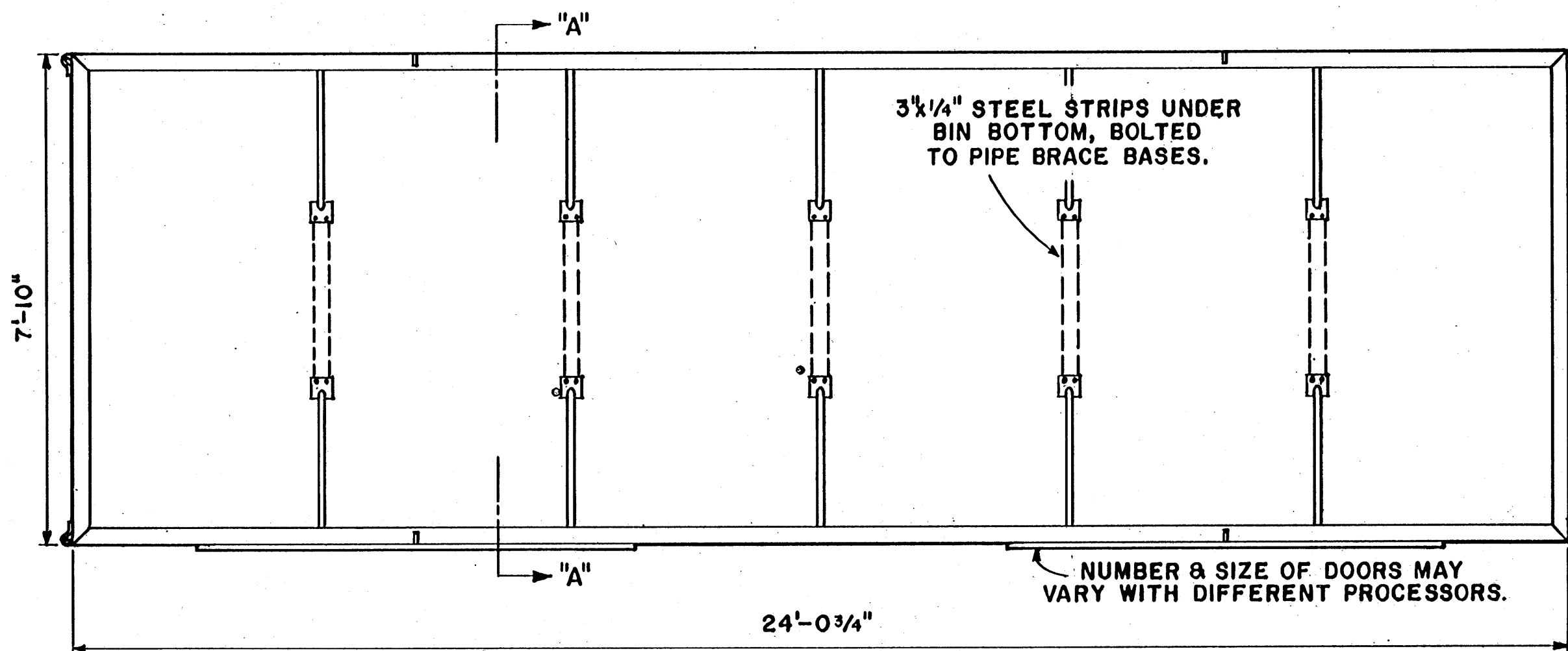
- $\frac{5}{8}$ " DFPA C-C PLUGGED EXTERIOR GROUP 1 OR 2.
- $\frac{5}{8}$ " DFPA B-C EXTERIOR GROUP 1 OR 2.
- $\frac{5}{8}$ " DFPA A-C EXTERIOR GROUP 1 OR 2.

#### BIN BOTTOM

- $1\frac{1}{8}$ " DFPA C-C PLUGGED EXTERIOR GROUP 1 OR 2 T & G.
- $1\frac{1}{8}$ " DFPA B-C EXTERIOR GROUP 1 OR 2 T & G.
- $1\frac{1}{8}$ " DFPA A-C EXTERIOR GROUP 1 OR 2 T & G.



SIDE ELEVATION



PLAN  
 12" 6" 0 1' 2'  
 SCALE:  $\frac{1}{2}$ " = 1'-0"

NOTE:  
 THE PLYWOOD USE RECOMMENDATIONS CONTAINED IN THIS PLAN ARE BASED ON AMERICAN PLYWOOD ASSOCIATION'S CONTINUING PROGRAM OF LABORATORY TESTING, PRODUCT RESEARCH AND COMPREHENSIVE FIELD EXPERIENCE. HOWEVER, QUALITY OF WORKMANSHIP AND THE CONDITIONS UNDER WHICH PLYWOOD IS USED VARY WIDELY. BECAUSE THE ASSOCIATION HAS NO CONTROL OVER THESE ELEMENTS, IT CANNOT ACCEPT RESPONSIBILITY FOR PLYWOOD PERFORMANCE OR DESIGNS AS ACTUALLY CONSTRUCTED.

12" 6" 0 1'  
 SCALE:  $\frac{3}{4}$ " = 1'-0" UNLESS OTHERWISE NOTED.

COOPERATIVE EXTENSION WORK IN  
 AGRICULTURE AND HOME ECONOMICS  
 STATE OF MISSISSIPPI  
 MISSISSIPPI STATE UNIVERSITY  
 AND  
 UNITED STATES DEPARTMENT OF AGRICULTURE COOPERATING

### BULK HAULER

APA '76 6263 SHEET 2 OF 2